

Datasheet for FLENDER Gear Unit B3HH04C25

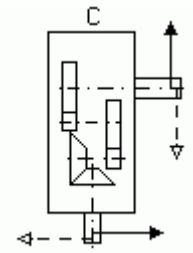
Design according to brochure: MD 20.1 (Gear units), Edition 2009

Ordering Data

2LP0022-3DB01-0GH1-Z

A05 +B00 +B15 +B28 +B63 +C00 +G30 +G36 +H00 +H10 +Y02
+Y20 +Y23

{Y02: 45 C}{Y20: 1465 rpm}{Y23: 22 kW}



Client-Order-No:

Order-No:

Quotation-No:

Item-No:

200

Consignment-No:

Project:

Gear unit - Basic data

| | |
|-----------------------------|----------------------------------|
| Type | B – (B) Bevel-helical gear unit |
| | 3 – stage |
| | H – (H) Hollow shaft with keyway |
| | H – (H) Horizontal |
| Installation size | 4 |
| gear design | C |
| Actual ratio | 25.38 (iN = 25) |
| Tolerance for special ratio | - |
| Nominal output torque | T2N = 6700 [Nm] |
| Nominal power rating | P2N = 40.95 [kW] |
| Service factor (T2N / T2) | 1.84 |
| mass | approx. 221.50 kg Without oil |

Explosion protection according to ATEX 95: No

Shaft 1 (left, front):

Seal: Radial shaft seal
Dimension: d1 = 30 m6; l3 = 50; G3 = 520 (mm)

Shaft 1 (right):

Seal: -
Dimension: -

Shaft 2 (left):

Seal: -
Dimension: -

Shaft 2 (right):

Seal: Radial shaft seal
Dimension: D2 = 80 H7; G4 = 140 (mm)

Power data

Prime mover: Electric motors

| | | |
|-----|-----------------|------------------------------|
| - | Motor | IEC 180L |
| Y23 | Motor power | P ₁ = 22.00 [kW] |
| - | Starting torque | T _A = 358.53 [Nm] |
| Y20 | Speed Shaft 1 | n ₁ = 1465 [rpm] |

Driven machine

| | | |
|---|---------------------------|--|
| - | Output power | P ₂ = P ₁ = 22.00 [kW] |
| - | Output torque | - |
| - | Speed Shaft 2 | n ₂ = 57.72 [rpm] |
| - | Operating cycle per hour | 100 % |
| - | Daily term | > 10 [h / day] |
| - | FEM rating | - |
| - | Factor for driven machine | f ₁ = 1.5 |
| - | Peak torque | f ₃ = 0.5 |

Application specification

| | | |
|--------|------------------------|--|
| G30 | Altitude up: | 1000 [m] |
| G36 | Place of installation: | Large halls, workshops (wind velocity > 1.4 m/s) |
| - /Y02 | Ambient temperature | -10.00 [°C] up to 45.00 [°C] |
| H00 | Oil grade | Mineral oil (CLP) |
| H10 | Oil viscosity | ISO VG 460 Oil not included |

Oil supply

| | |
|---|-----------------|
| - | Dip lubrication |
|---|-----------------|

Additional cooling

| | |
|---|------------------------|
| 1 | Fan (PG = 41.39 kW) |
|---|------------------------|

Conservation

A../B../... K.051.00.06.01.116. Color RAL 5015 sky blue (see details)

Other options

- with declaration of compliance with the order acc. to DIN 10204-2.1
- Plates out of weather and temperature resistant foil

Motor connection

Brake console

Mounting parts

- **Backstop:**
Design: [...] Standard Design
Direction of rotation of gear output shaft: CW rotation
- Air Filter Standard air filter acc.to F 5125 type 1

Details of conservation: (identification keys)

| | |
|-----|---|
| A05 | Application Conveyors, belt drives, open-pit coal mining, Australia |
| B00 | Climatic stress Climate not taken into account |
| B15 | Internal corrosion prevention Castrol Alpha SP 220 S, up to 24 months |
| B28 | External corrosion prevention TECTYL 846 K-19 |
| B63 | Coating system Special painting, finishing coat, open-pit coal mining Australia |
| C00 | Color: Color RAL 5015 sky blue |

Datasheet for FLENDER Gear Unit B3SH07C31.5

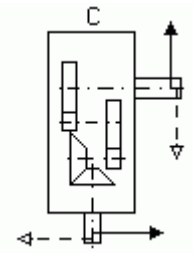
Design according to brochure: MD 20.1 (Gear units), Edition 2009

Ordering Data

2LP0022-6AB01-0JN2-Z

A05 +B00 +B15 +B28 +B63 +C00 +G30 +G36 +H00 +H10 +Y02
+Y20 +Y23

{Y02: 45 C}{Y20: 1485 rpm}{Y23: 75 kW}



Client-Order-No:

Order-No:

Quotation-No:

Item-No:

400

Consignment-No:

Project:

Gear unit - Basic data

| | |
|-----------------------------|---------------------------------|
| Type | B – (B) Bevel-helical gear unit |
| | 3 – stage |
| | S – (S) Solid shaft |
| | H – (H) Horizontal |
| Installation size | 7 |
| gear design | C |
| Actual ratio | 30.509 (iN = 31.5) |
| Tolerance for special ratio | - |
| Nominal output torque | T2N = 21700 [Nm] |
| Nominal power rating | P2N = 107.85 [kW] |
| Service factor (T2N / T2) | 1.47 |
| mass | approx. 577.00 kg Without oil |

Explosion protection according to ATEX 95: No

Shaft 1 (left, front):

Seal: Radial shaft seal
Dimension: d1 = 45 m6; l3 = 80; G3 = 710 (mm)

Shaft 1 (right):

Seal: -
Dimension: -

Shaft 2 (left):

Seal: -
Dimension: -

Shaft 2 (right):

Seal: Radial shaft seal
Dimension: d2 = 120 n6; l2 = 210; G2 = 195 (mm)

Power data

Prime mover: Electric motors

| | | |
|-----|-----------------|-------------------------------|
| - | Motor | IEC 280S |
| Y23 | Motor power | P ₁ = 75.00 [kW] |
| - | Starting torque | T _A = 1205.80 [Nm] |
| Y20 | Speed Shaft 1 | n ₁ = 1485 [rpm] |

Driven machine

| | | |
|---|---------------------------|--|
| - | Output power | P ₂ = P ₁ = 75.00 [kW] |
| - | Output torque | - |
| - | Speed Shaft 2 | n ₂ = 48.67 [rpm] |
| - | Operating cycle per hour | 100 % |
| - | Daily term | > 10 [h / day] |
| - | FEM rating | - |
| - | Factor for driven machine | f ₁ = 1.5 |
| - | Peak torque | f ₃ = 0.5 |

Application specification

| | | |
|--------|------------------------|--|
| G30 | Altitude up: | 1000 [m] |
| G36 | Place of installation: | Large halls, workshops (wind velocity > 1.4 m/s) |
| - /Y02 | Ambient temperature | -10.00 [°C] up to 45.00 [°C] |
| H00 | Oil grade | Mineral oil (CLP) |
| H10 | Oil viscosity | ISO VG 460 Oil not included |

Oil supply

- Dip lubrication

Additional cooling

1 Fan
(PG = 85.26 kW)

Conservation

A../B../... K.051.00.06.01.116. Color RAL 5015 sky blue (see details)

Other options

- with declaration of compliance with the order acc. to DIN 10204-2.1
- Plates out of weather and temperature resistant foil

Motor connection

Brake console

Mounting parts

- **Backstop:**
Design: [...] Standard Design
Direction of rotation of gear output shaft: CCW rotation
- Air Filter Standard air filter acc.to F 5125 type 1

Details of conservation: (identification keys)

| | |
|-----|---|
| A05 | Application Conveyors, belt drives, open-pit coal mining, Australia |
| B00 | Climatic stress Climate not taken into account |
| B15 | Internal corrosion prevention Castrol Alpha SP 220 S, up to 24 months |
| B28 | External corrosion prevention TECTYL 846 K-19 |
| B63 | Coating system Special painting, finishing coat, open-pit coal mining Australia |
| C00 | Color: Color RAL 5015 sky blue |

Datasheet for FLENDER Gear Unit B3HH06C31.5

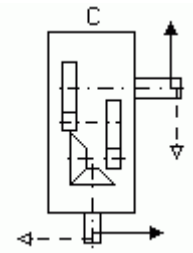
Design according to brochure: MD 20.1 (Gear units), Edition 2009

Ordering Data

2LP0022-5DB01-0JL1-Z

A05 +B00 +B15 +B28 +B63 +C00 +G30 +G36 +H00 +H10 +Y02
+Y20 +Y23

{Y02: 45 C}{Y20: 1475 rpm}{Y23: 45 kW}



Client-Order-No:

Order-No:

Quotation-No:

Item-No:

500

Consignment-No:

Project:

Gear unit - Basic data

| | |
|--|----------------------------------|
| Type | B – (B) Bevel-helical gear unit |
| | 3 – stage |
| | H – (H) Hollow shaft with keyway |
| | H – (H) Horizontal |
| Installation size | 6 |
| gear design | C |
| Actual ratio | 31.508 (iN = 31.5) |
| Tolerance for special ratio | - |
| Nominal output torque | T _{2N} = 15500 [Nm] |
| Nominal power rating | P _{2N} = 75.67 [kW] |
| Service factor (T _{2N} / T ₂) | 1.69 |
| mass | approx. 394.10 kg Without oil |

Explosion protection according to ATEX 95: No

Shaft 1 (left, front):

Seal: Radial shaft seal
Dimension: d1 = 35 m6; l3 = 60; G3 = 630 (mm)

Shaft 1 (right):

Seal: -
Dimension: -

Shaft 2 (left):

Seal: -
Dimension: -

Shaft 2 (right):

Seal: Radial shaft seal
Dimension: D2 = 105 H7; G4 = 165 (mm)

Power data

Prime mover: Electric motors

| | | |
|-----|-----------------|------------------------------|
| - | Motor | IEC 225M |
| Y23 | Motor power | P ₁ = 45.00 [kW] |
| - | Starting torque | T _A = 786.67 [Nm] |
| Y20 | Speed Shaft 1 | n ₁ = 1475 [rpm] |

Driven machine

| | | |
|---|---------------------------|--|
| - | Output power | P ₂ = P ₁ = 45.00 [kW] |
| - | Output torque | - |
| - | Speed Shaft 2 | n ₂ = 46.81 [rpm] |
| - | Operating cycle per hour | 100 % |
| - | Daily term | > 10 [h / day] |
| - | FEM rating | - |
| - | Factor for driven machine | f ₁ = 1.5 |
| - | Peak torque | f ₃ = 0.5 |

Application specification

| | | |
|--------|------------------------|--|
| G30 | Altitude up: | 1000 [m] |
| G36 | Place of installation: | Large halls, workshops (wind velocity > 1.4 m/s) |
| - /Y02 | Ambient temperature | -10.00 [°C] up to 45.00 [°C] |
| H00 | Oil grade | Mineral oil (CLP) |
| H10 | Oil viscosity | ISO VG 460 Oil not included |

Oil supply

| | |
|---|-----------------|
| - | Dip lubrication |
|---|-----------------|

Additional cooling

| | |
|---|------------------------|
| 1 | Fan (PG = 64.61 kW) |
|---|------------------------|

Conservation

A../B../... K.051.00.06.01.116. Color RAL 5015 sky blue (see details)

Other options

- with declaration of compliance with the order acc. to DIN 10204-2.1
- Plates out of weather and temperature resistant foil

Motor connection

Brake console

Mounting parts

- **Backstop:**
Design: [...] Standard Design
Direction of rotation of gear output shaft: CW rotation
- Air Filter Standard air filter acc.to F 5125 type 1

Details of conservation: (identification keys)

| | |
|-----|---|
| A05 | Application Conveyors, belt drives, open-pit coal mining, Australia |
| B00 | Climatic stress Climate not taken into account |
| B15 | Internal corrosion prevention Castrol Alpha SP 220 S, up to 24 months |
| B28 | External corrosion prevention TECTYL 846 K-19 |
| B63 | Coating system Special painting, finishing coat, open-pit coal mining Australia |
| C00 | Color: Color RAL 5015 sky blue |

Datasheet for FLENDER Gear Unit B3SH11C40

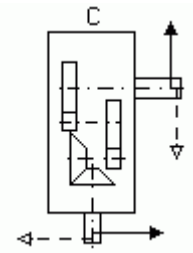
Design according to brochure: MD 20.1 (Gear units), Edition 2009

Ordering Data

2LP0022-1BB01-0LR1-Z

A04 +B01 +B15 +B28 +B41 +C00 +G30 +G36 +H00 +H10 +Y02
+Y20 +Y23

{Y02: 45 C}{Y20: 1488 rpm}{Y23: 132 kW}



Client-Order-No:

Order-No:

Quotation-No:

Item-No:

600

Consignment-No:

Project:

Gear unit - Basic data

| | |
|------|---------------------------------|
| Type | B – (B) Bevel-helical gear unit |
| | 3 – stage |
| | S – (S) Solid shaft |
| | H – (H) Horizontal |

| | |
|-----------------------------|--------------------------------|
| Installation size | 11 |
| gear design | C |
| Actual ratio | 39.861 (iN = 40) |
| Tolerance for special ratio | - |
| Nominal output torque | T2N = 63500 [Nm] |
| Nominal power rating | P2N = 249.88 [kW] |
| Service factor (T2N / T2) | 1.88 |
| mass | approx. 1511.00 kg Without oil |

Explosion protection according to ATEX 95: No

Shaft 1 (left, front):

| | |
|------------|-------------------------------------|
| Seal: | Radial shaft seal |
| Dimension: | d1 = 70 m6; l3 = 105; G3 = 990 (mm) |

Shaft 1 (right):

| | |
|------------|---|
| Seal: | - |
| Dimension: | - |

Shaft 2 (left):

| | |
|------------|---|
| Seal: | - |
| Dimension: | - |

Shaft 2 (right):

| | |
|------------|--------------------------------------|
| Seal: | Radial shaft seal |
| Dimension: | d2 = 170 n6; l2 = 300; G2 = 270 (mm) |

Power data

Prime mover: Electric motors

| | | |
|-----|-----------------|-------------------------------|
| - | Motor | IEC 315M |
| Y23 | Motor power | P ₁ = 132.00 [kW] |
| - | Starting torque | T _A = 2287.39 [Nm] |
| Y20 | Speed Shaft 1 | n ₁ = 1488 [rpm] |

Driven machine

| | | |
|---|---------------------------|---|
| - | Output power | P ₂ = P ₁ = 132.00 [kW] |
| - | Output torque | - |
| - | Speed Shaft 2 | n ₂ = 37.33 [rpm] |
| - | Operating cycle per hour | 100 % |
| - | Daily term | > 10 [h / day] |
| - | FEM rating | - |
| - | Factor for driven machine | f ₁ = 1.5 |
| - | Peak torque | f ₃ = 0.5 |

Application specification

| | | |
|--------|------------------------|--|
| G30 | Altitude up: | 1000 [m] |
| G36 | Place of installation: | Large halls, workshops (wind velocity > 1.4 m/s) |
| - /Y02 | Ambient temperature | -10.00 [°C] up to 45.00 [°C] |
| H00 | Oil grade | Mineral oil (CLP) |
| H10 | Oil viscosity | ISO VG 460 Oil not included |

Oil supply

| | |
|---|-----------------|
| - | Dip lubrication |
|---|-----------------|

Additional cooling

| | |
|---|-------------------------|
| 1 | Fan (PG = 159.92 kW) |
|---|-------------------------|

Conservation

A../B../... K.050.06.06.01.002. Color RAL 5015 sky blue (see details)

Other options

- with declaration of compliance with the order acc. to DIN 10204-2.1
- Plates out of weather and temperature resistant foil

Motor connection

Brake console

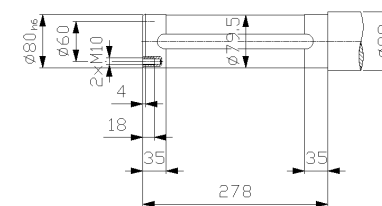
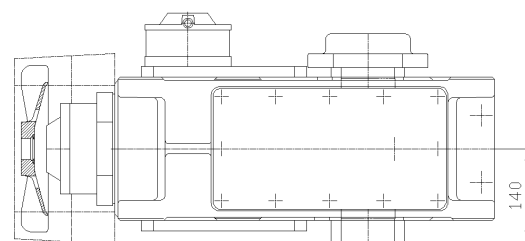
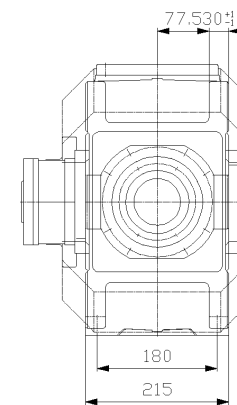
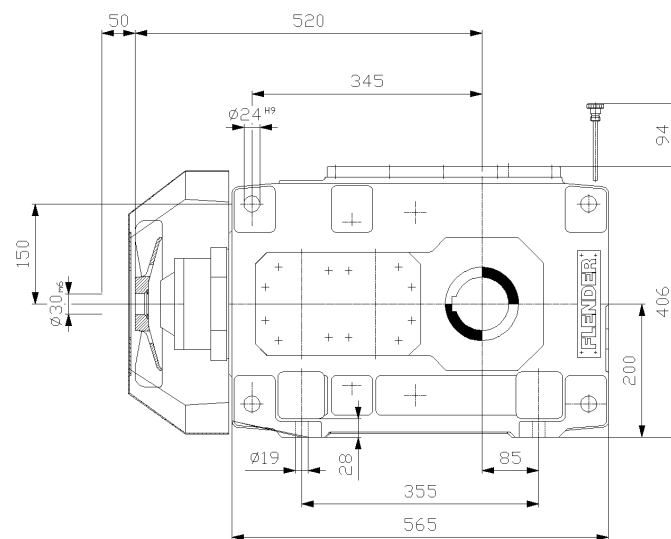
Mounting parts

- **Backstop:**
Design: [...] Standard Design
Direction of rotation of gear output shaft: CW rotation
- Air Filter Standard air filter acc.to F 5125 type 1

Details of conservation: (identification keys)

| | |
|-----|--|
| A04 | Application Conveyors |
| B01 | Climatic stress temperate climate zones, central european conditions |
| B15 | Internal corrosion prevention Castrol Alpha SP 220 S, up to 24 months |
| B28 | External corrosion prevention TECTYL 846 K-19 |
| B41 | Coating system Standard coating, finishing coat, moderate climatic zones |
| C00 | Color: Color RAL 5015 sky blue |

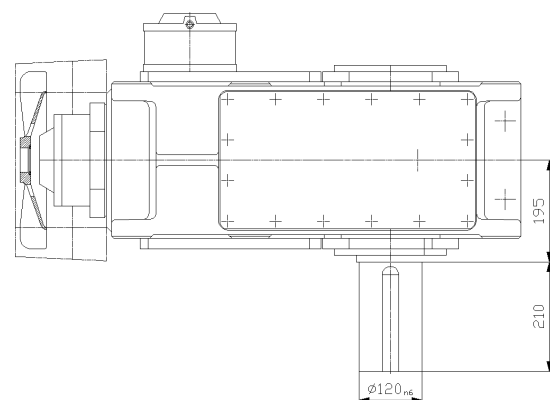
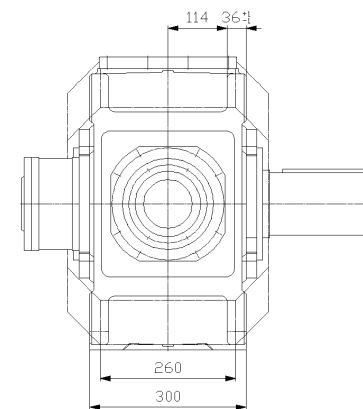
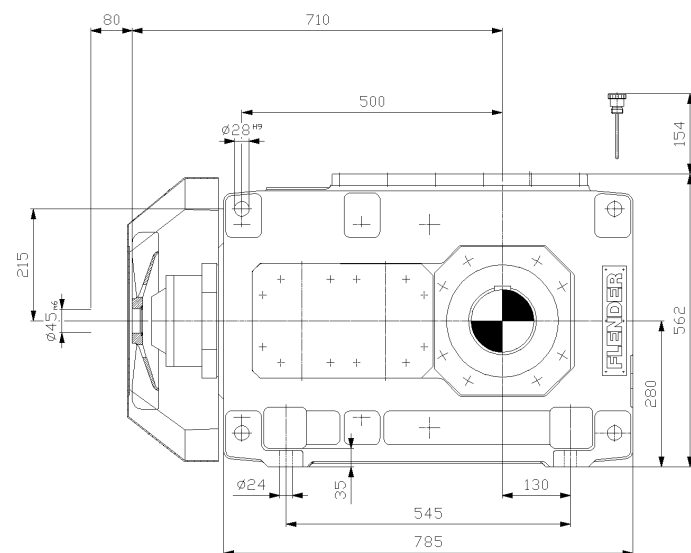
For your information only.



B3HH4C25

xCAT Vers. 9.2.9646

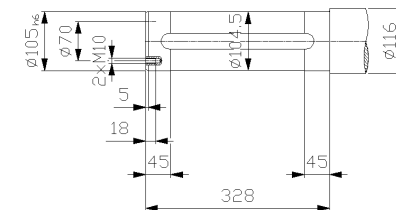
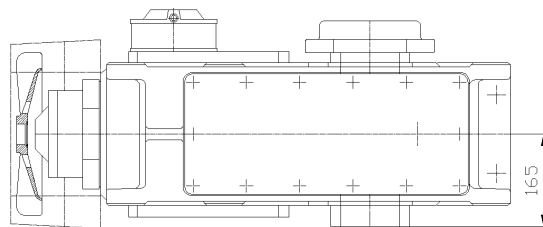
For your information only.



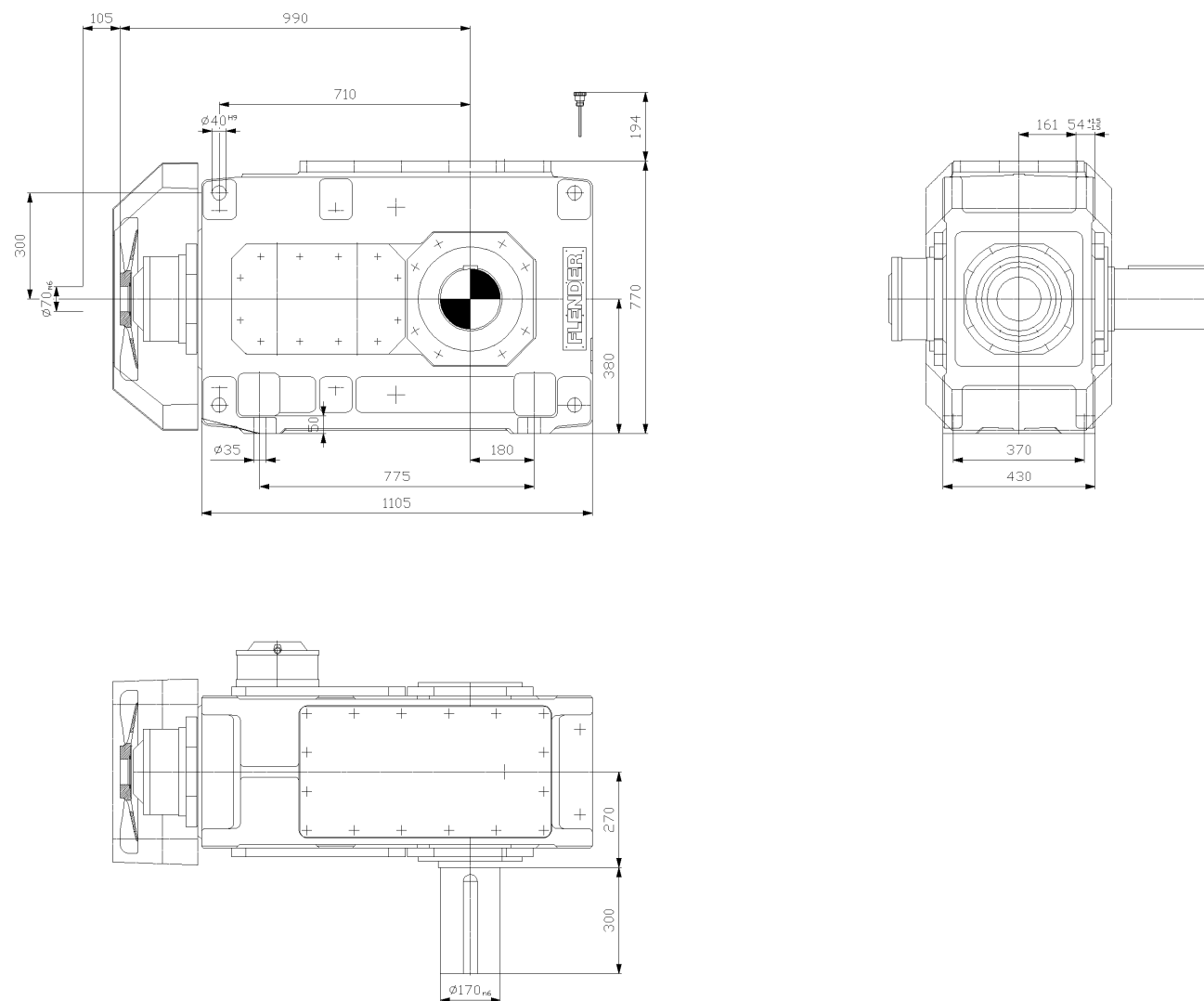
B3SH7C31.5

xCAT Vers. 9.2.9646

B3HH6C31.5



For your information only.



B3SH11C40

xCAT Vers. 9.2.9646